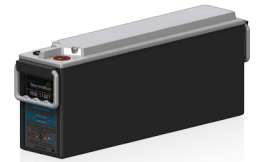


Performance Table @ 20°C (68°F)

NSB 110FT Silver



Current / A

Duration		End of Discharge Voltage								
Mins	Hours	1.85	1.80	1.75	1.70	1.67	1.65	1.60	1.55	1.50
2	0.03	479.8	546.0	611.5	674.1	709.3	731.4	781.1	821.1	849.5
5	0.08	352.3	388.5	423.0	454.7	472.0	482.6	505.7	523.3	534.6
10	0.17	250.5	270.0	288.1	304.2	312.8	318.0	329.1	337.0	341.7
15	0.25	197.7	210.5	222.2	232.4	237.8	241.0	247.7	252.4	254.9
20	0.33	164.8	174.0	182.3	189.5	193.2	195.5	200.0	203.2	204.7
30	0.50	125.1	130.7	135.6	139.9	142.0	143.3	145.9	147.5	148.3
45	0.75	93.2	96.4	99.3	101.6	102.8	103.5	104.9	105.7	106.0
60	1	74.8	77.0	78.9	80.4	81.2	81.6	82.5	83.0	83.1
120	2	42.9	43.7	44.4	44.9	45.2	45.3	45.6	45.7	45.7
180	3	30.5	31.0	31.4	31.7	31.8	31.9	32.1	32.1	32.1
240	4	23.9	24.2	24.5	24.7	24.8	24.9	25.0	25.1	25.1
300	5	19.7	20.0	20.2	20.4	20.5	20.6	20.6	20.7	20.7
480	8	13.1	13.3	13.5	13.7	13.8	13.8	13.9	13.9	13.9
600	10	10.8	11.0	11.2	11.3	11.4	11.5	11.5	11.6	11.6
1200	20	5.9	6.1	6.3	6.5	6.5	6.6	6.7	6.7	6.8

Capacity / Ah

Duration		End of Discharge Voltage								
Mins	Hours	1.85	1.80	1.75	1.70	1.67	1.65	1.60	1.55	1.50
2	0.03	16.0	18.2	20.4	22.5	23.6	24.4	26.0	27.4	28.3
5	0.08	29.4	32.4	35.2	37.9	39.3	40.2	42.1	43.6	44.5
10	0.17	41.7	45.0	48.0	50.7	52.1	53.0	54.8	56.2	56.9
15	0.25	49.4	52.6	55.5	58.1	59.4	60.2	61.9	63.1	63.7
20	0.33	54.9	58.0	60.8	63.2	64.4	65.2	66.7	67.7	68.2
30	0.50	62.5	65.3	67.8	69.9	71.0	71.7	72.9	73.8	74.1
45	0.75	69.9	72.3	74.4	76.2	77.1	77.7	78.7	79.3	79.5
60	1	74.8	77.0	78.9	80.4	81.2	81.6	82.5	83.0	83.1
120	2	85.8	87.4	88.7	89.8	90.3	90.6	91.1	91.4	91.4
180	3	91.6	93.0	94.2	95.1	95.5	95.8	96.2	96.4	96.4
240	4	95.5	96.9	98.0	99.0	99.4	99.6	100.0	100.2	100.2
300	5	98.5	99.9	101.1	102.1	102.5	102.8	103.2	103.4	103.4
480	8	104.7	106.6	108.1	109.4	110.0	110.4	111.0	111.4	111.4
600	10	107.8	110.0	111.8	113.4	114.1	114.6	115.4	115.9	116.0
1200	20	118.3	122.4	126.0	129.0	130.6	131.5	133.4	134.7	135.3

Power / W per cell

Duration		End of Discharge Voltage								
Mins	Hours	1.85	1.80	1.75	1.70	1.67	1.65	1.60	1.55	1.50
2	0.03	899.1	1000.6	1097.9	1187.7	1236.5	1266.7	1331.9	1380.7	1411.1
5	0.08	668.4	726.5	780.2	827.9	852.9	868.0	899.2	920.3	930.7
10	0.17	480.6	513.1	542.3	567.5	580.5	588.1	603.3	612.8	616.3
15	0.25	382.1	403.8	423.0	439.4	447.6	452.4	461.9	467.4	469.0
20	0.33	319.9	335.8	349.7	361.4	367.3	370.7	377.2	380.9	381.6
30	0.50	244.5	254.3	262.8	269.9	273.3	275.3	279.1	281.0	281.2
45	0.75	183.2	189.0	194.0	198.1	200.0	201.2	203.2	204.2	204.2
60	1	147.7	151.6	154.9	157.6	158.9	159.7	161.0	161.6	161.6
120	2	85.2	86.7	87.9	88.9	89.4	89.6	90.1	90.3	90.3
180	3	60.8	61.6	62.4	62.9	63.2	63.4	63.6	63.7	63.7
240	4	47.5	48.2	48.7	49.1	49.3	49.4	49.6	49.7	49.7
300	5	39.2	39.7	40.2	40.5	40.7	40.8	40.9	41.0	41.0
480	8	26.0	26.4	26.7	27.0	27.1	27.2	27.3	27.4	27.4
600	10	21.3	21.7	22.0	22.3	22.4	22.5	22.6	22.7	22.7
1200	20	11.6	11.9	12.2	12.4	12.6	12.6	12.8	12.9	12.9